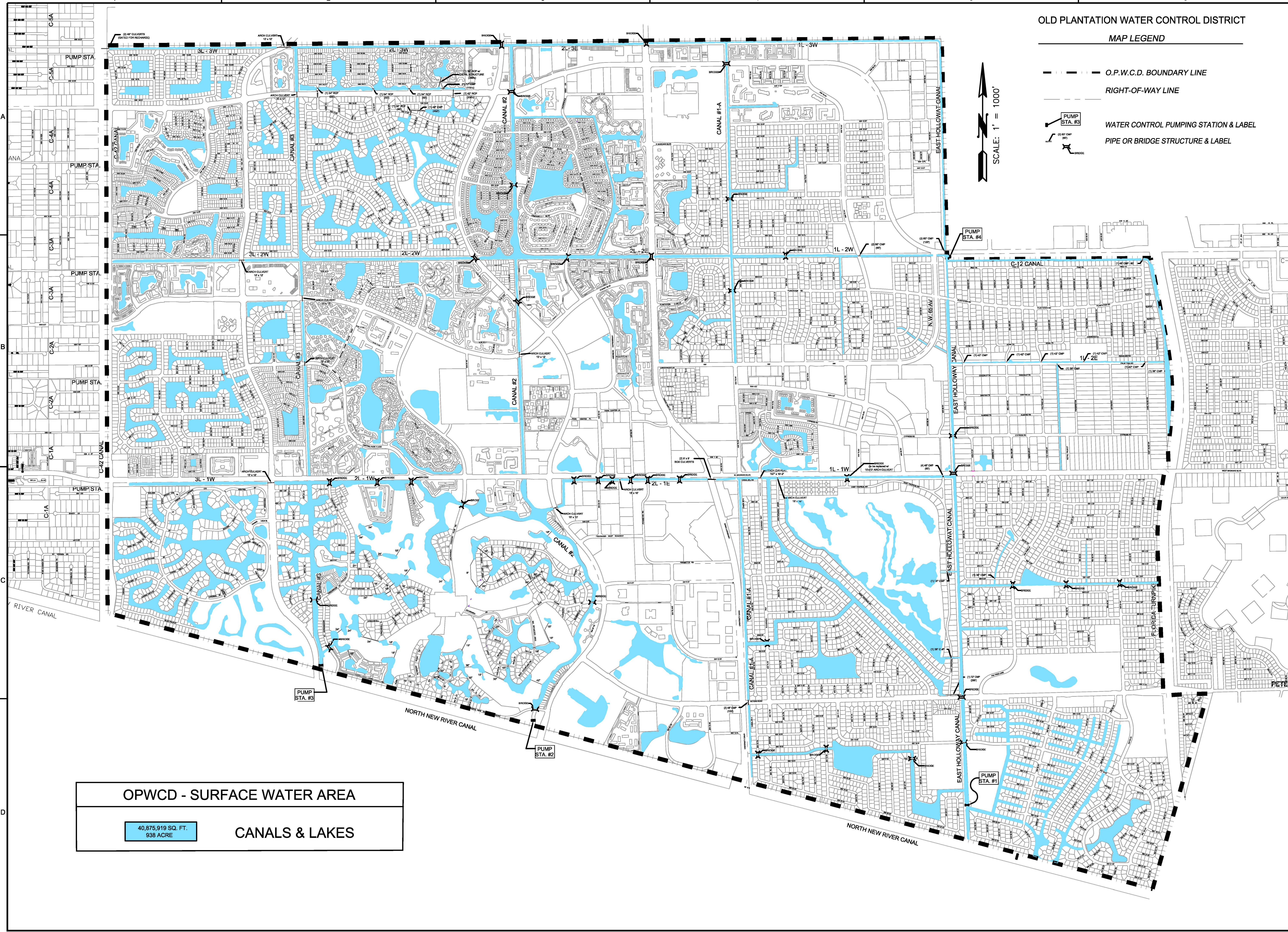


FILENAME: op-dwg_water_area_and_aerial_website_2.dwg PLOT DATE: 8/29/2011 PLOT TIME: 11:56:02 AM



OLD PLANTATION WATER CONTROL DISTRICT

MAP LEGEND

- O.P.W.C.D. BOUNDARY LINE
- RIGHT-OF-WAY LINE
- WATER CONTROL PUMPING STATION & LABEL
- PIPE OR BRIDGE STRUCTURE & LABEL

SCALE: 1" = 1000'

OPWCD - SURFACE WATER AREA
 40,875,919 SQ. FT.
 938 ACRE
 CANALS & LAKES

800 FAIRWAY DRIVE - SUITE 350
 DEERFIELD BEACH, FL 33441
 PH (561) 426-4006 FAX (561) 668-8010

CH2MHILL

CIVIL
 OPWCD WATER SURFACE AREAS MAP

OLD PLANTATION WATER CONTROL DISTRICT AREA MAP
 OLD PLANTATION WATER CONTROL DISTRICT
 PLANTATION, FLORIDA

DATE	APRIL, 2009
PROJ	178724
DWG	op-dwg_water_area_and_aerial.dwg
SHEET	-

NO.	DATE	DR	REVISION	BY	APVD
1		D. BOHORQUEZ		S. GODIN	C. DASILVA
2		J. EARLY		J. EARLY	J. EARLY

RELEASE OF DOCUMENTS: THIS DOCUMENT, AND THE IDEAS AND DESIGNS INCORPORATED HEREIN, AS AN INSTRUMENT OF PROFESSIONAL SERVICE, IS THE PROPERTY OF CH2MHILL. CH2MHILL AND IS NOT TO BE USED, IN WHOLE OR IN PART, FOR ANY OTHER PROJECT WITHOUT THE WRITTEN AUTHORIZATION OF CH2MHILL. ©CH2MHILL 2008. ALL RIGHTS RESERVED.